





.2

.-1 , , 9 .

."

" .

" .

" .

" .

" .



.3

.1

18

( " )				
4500			9-1	1
9000		2 /		2
2500				3
4000				4
1500				5
1000		"		6
400	1984- " 17 ' '			7
3500	' 1991- " 6 ' ' /		8,6,4,3,2	8
		2- 0.5 / /		9

# HADAS

CONSTRUCTION INSPECTION Ltd.  
SUPERVISION & ENGINEERING ACCOMPANIMENT  
National deployment



1200		/		10
4000				11
120				12
2000		,		13
	' 1991- "			14
	' 1970- "	- / , ,	2 2	15
		,		16
		.	\	17
250	1984- " ' 51	-		18
180		/		19
500		/ / / / /		20
450	200- " , , , , , ,	,	,	21
120				22

# HADAS

CONSTRUCTION INSPECTION Ltd.  
SUPERVISION & ENGINEERING ACCOMPANIMENT  
National deployment



280	1991- " 25'	- ,	23
1000			24
800	200- " , , , , , ,	,	25
700			26

072-2740719

09-7742446

רעננה – רח' רבקה גובר 6/22 שכ' לב הפארק

ירושלים – 02-6450935

חיפה – 04-8254971

תל אביב – 03-5731232

[www.hadas-g.co.il](http://www.hadas-g.co.il)

[hadas-bm@zahav.net.il](mailto:hadas-bm@zahav.net.il)



.4

4

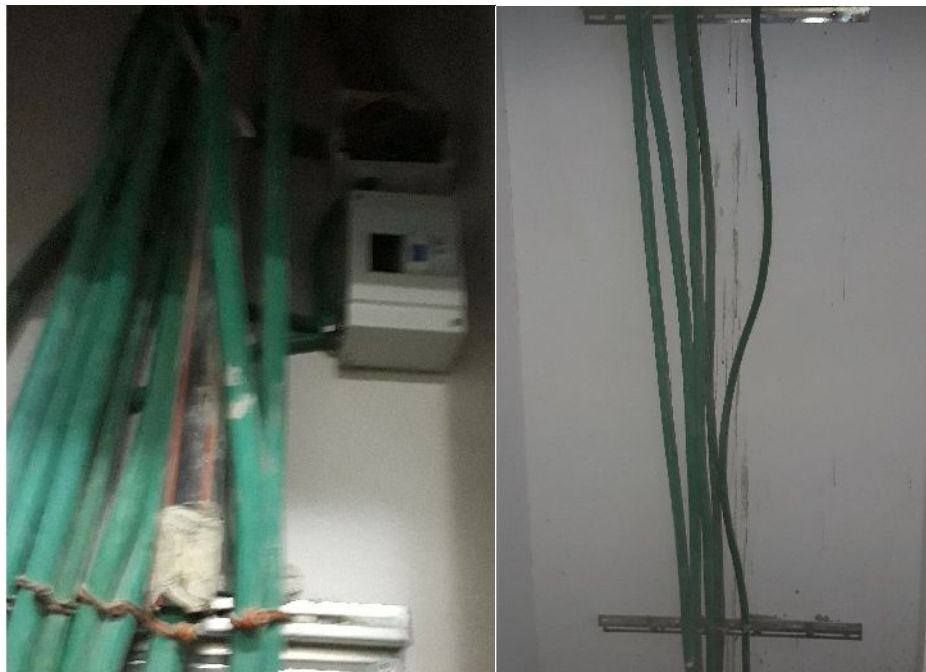




5,8

16 ' 1991- 1000

2- 0.5



23

25' 1991- "

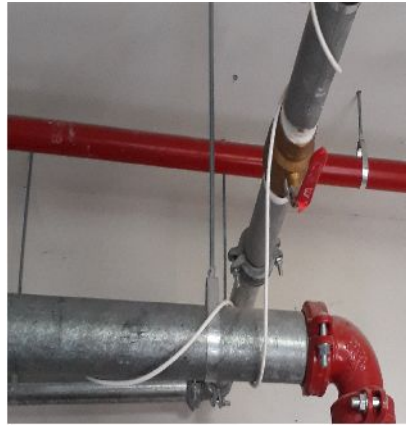


2











# HADAS

CONSTRUCTION INSPECTION Ltd.  
SUPERVISION & ENGINEERING ACCOMPANIMENT  
National deployment



.60 ' ' ' "

"

-

-

)

.(

" + 4500

40

8 2 24.5

( " )42,500



*[Handwritten signature]*